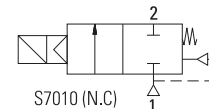


GENERAL FEATURES

- **TORK series S7010 diaphragm explosion proof solenoid valves are 2/2 way normally closed and pilot operated**
- **Explosion proof solenoid valves for use in zone 1 and zone 2**
- **Suitable for non-aggressive liquids (water, light oil (2E) etc...), gaseous fluids (air, iner gases etc...)**
- **On request Atex coil**
- Working Temperature: -10°C / +80°C
- Not suitable for use with dangerous fluids listed in Group 1
- **Minimum operating differential pressure 0,5 bar**
- High reliability, quality and performance; long life, corrosion resistance
- Wide pressure ratings, range of flow rate and orifice options
- Ideal for the automatic control of media in a wide range of applications.
- TORK solenoid valves satisfy relevant 97/23/EC, Pressure Equipment Directive (PED) and 2006/95/EEC Low Voltage Directive (LVD).
- Coils interchangeable
- Flow factor Kv of each valve is indicated, so that the flow Q can be calculated as a function of pressure
- Solenoid valves must be used with filtered fluids.
- Solenoid valve can be mounted in any position without affecting operation; vertical with coil upwards preferred.
- Standard pipe connection is G (BSP) (ISO 228-1) and on request; other pipe connections are available (NPT (ANSI 1.20.3))

Normally Closed



ELECTRICAL CHARACTERISTICS

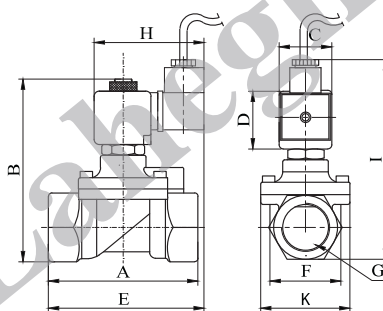
- Continuous Duty : ED %100
 Coil Insulation Class : H (180°C)
 Coil Impregnation : Fiber Glass Reinforced or PP-V0 (Self-Extinguishing Polypropylene)
 Coil Encapsulation Material : Fiber Glass Reinforced or PP-V0 (Self-Extinguishing Polypropylene)
 Explosionproof operator, intended for use in potentially explosive atmospheres
 Easy electrical installation by means of the cable, standard length 3 meters
- Safety mode : EEx em II T4/T5 (Max Surface Temperature: 100°C - 135°C, em: encapsulation increased safety, II: Equipment group)
- Protection Degree : IP 65 (EN 60529) with coil duly fitted with the plug connector
 Electrical Safety : IEC 335
 Standard Voltages : For AC 12V, 24V, 48V, 110V, 230V
 For DC 12V, 24V, 48V, 110 V
- Other voltages on request;
 Voltage Tolerances : For AC -15%; +10%, For DC -5%; +10%
 Frequency : 50 Hz , other frequencies on request; (60 Hz)
 Specify coil voltage with order

MATERIALS IN CONTACT WITH FLUID

- Body: Brass
 Internal Parts: Stainless Steel and brass
 Sealing: NBR
 Shading Ring: Copper
 Seats: Brass
 Core Tube: Stainless Steel
 Springs: Stainless Steel
 On request; nickel plated body
 On request; sealing can be FPM (VITON), EPDM

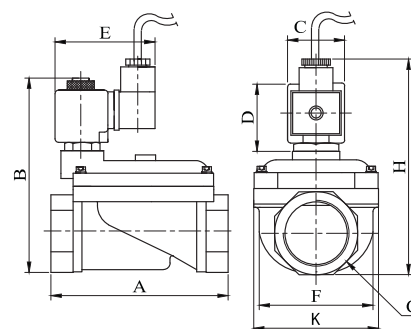
TECHNICAL FEATURES

- Max Viscosity : 5°E (~37cSt or mm²/s)
 Response Time : Opening Time: 400 ms to ~ 1600 ms,
 Closing Time : 1000 ms to ~ 2000 ms
 Maximum Allowable Pressure: 25 bar
 Fluid Temperature for FPM (VITON) from -10°C; +160°C,
 for EPDM from -10°C; +140°C



Dimensions (mm)

	G	A	B	C	D	E	F	K	H	I
3/8"	75	97	32	45	91.3	37.5	52	76	108	
1/2"	79	100	32	45	92	39.5	52	76	110	
3/4"	79	107.5	32	45	94	41.5	52	76	118	
1"	85	115	32	45	101	42.5	52	76	124	



Dimensions (mm)

	G	A	B	C	D	E	F	K	H
11/4"	141	143	32	45	73.4	96.5	110.7	156	
11/2"	139	143	32	45	73.4	96.5	110.7	156	
2"	145.6	153	32	45	73.4	96.5	110.7	165.5	

Valve Type / Order no	Connection Size	Orifice size	Pressure		KV	Fluid Temperature		Seal	Weight
			min	max		min	max		
S7010	G	mm	bar	bar	lt/min	min	max		(kg)
S7010.02	3/8"	12.5	0.5	16	48	-10	80	NBR	0.9
S7010.03	1/2"	14.5	0.5	16	70	-10	80	NBR	0.93
S7010.04	3/4"	17	0.5	16	85	-10	80	NBR	1.02
S7010.05	1"	17	0.5	16	90	-10	80	NBR	1.2
S7010.06	11/4"	46	0.5	12	390	-10	80	NBR	2.87
S7010.07	11/2"	46	0.5	12	460	-10	80	NBR	2.77
S7010.08	2"	46	0.5	12	580	-10	80	NBR	3.2

Useful Informations

1 bar: 14.5 PSI: 10 mH₂O: 10 N/cm²: 1 kg/cm²: 100000 Pa, 1 PSI: 69 mbar, 1 m³/h: 4.405 GPM: 16.7 L/d 1 Gallon / minute: 0.227 m³/h, 0°C: 89.6 F
 Sealings: NBR: Nitrile-Butylene Elastomer, FPM (VITON): Fluoro-Carbon Elastomer, EPDM: Ethylene-Propylene Elastomer